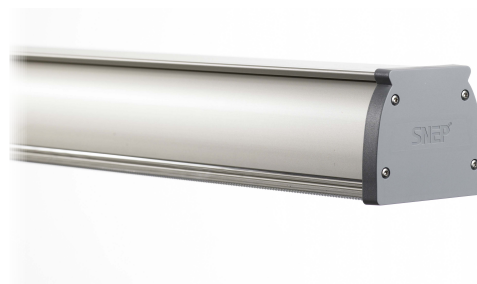


### Mechanical properties

Protection class	I
Degree of protection	IP44 / IP64
IK-classification	IK08
Operating temperature	-25...+40 °C / -40...+50°C



Body structure / other technical information	Frame aluminium profile, ends durable and fire-retardant V-0-fire classified PC-plastic.
General information / product information	SNEP Linear S -series luminaires are led-luminaires without compromise. Linear S luminaire has a sturdy and stylish aluminium frame and utilizes the latest led technology available combined with high-class optics. Versatile installation and connection types with various different power options makes this an ideal luminaire for a wide range of destinations. The luminaire can be installed not only to ceiling but also for conventional lighting suspensions rails with SNEP-brackets. Luminaire is also available as a ramp version.
Diffuser / optics	Optical diffuser, high efficiency optical cover micro prism, clear or satin PC.
Mounting	Ceiling, lighting suspension rail, cable, suspended or with adjustable ramp bracket. Installation kits available separately.

### Electrical values

Voltage	220 - 240 V	
Frequency	50 / 60 Hz	
Power	27 / 34 / 43 / 54 / 68 W	
Control / dimming	On/off, DALI	
Light source	LED	
Electrical connection **	Quick connector or preassembled connection cable (3x1,5mm <sup>2</sup> / 5x2,5mm <sup>2</sup> )	
Power factor	> 0,95	
Luminaire lifespan *	L80B50 100.000 h	
Failure rate *	100.000h / 10%	

\* In normal room temperature  $T_a + 25^\circ\text{C}$

\*\* Also available with different types of cables, lengths, connectors and through-wirings

Not to be installed in condensing environments

There is a  $\pm 5\%$  tolerance in output power and luminous flux

### Measurements

A	1210 mm	
B	85 mm	
C	75 mm	
D	1250 mm	
Weight	2,5 kg	

1 LED properties		2 Optical properties		3 Mechanical properties	
8	30	P1	C	44	S
Minimum CRI	Colour temperature	Optics	Optical cover	Degree of protection	Colour

**LED options**

830 = CRI min. 80 typ. 85, CCT 3000K

840 = CRI min. 80 typ. 85, CCT 4000K

850 = CRI min. 80 typ. 85, CCT 5000K

**Light distributions**

Polar light distribution charts can be found in the end of the datasheet.

P1C = High efficiency optical diffuser and clear cover

P1M = High efficiency optical diffuser and microprism cover

P1S = High efficiency optical diffuser and satin cover

**Degree of protection options**

44 = IP44 Protection against object sized over a 1mm and splashing of water

64 = IP64 Cover against dust and splashing water

**Colour options**

S = Anodised grey

## 4 Electrical properties

56	1	1	0	0
Power	Connection type	Cable length	Connector	Electronics

**Power options**

28 = 27W  
35 = 34W  
45 = 43W  
56 = 54W  
70 = 68W

**Cable length options**

0 = no cable  
1 = 1,5m  
2 = 4m  
Through-wiring (\*)  
3 = 1,8m + 1,9m  
4 = 1,8m + 2,9m  
5 = 1,8m + 3,9m  
6 = 1,8m + 0,9m  
7 = 0,8m + 0,9m

\*The stated cable lengths are the actual lengths that the cable comes out of the luminaire (±0,1 m)

**Connector options**

0 = No connector  
1 = Wago Winsta (IP 20)  
2 = Enstonet (IP 20)  
3 = Schuko plug

**Connection options**

0. Quick connection Phoenix QPD 3x1,0-1,5mm<sup>2</sup>  
1. Connection cable from end (MSK) 1,5mm<sup>2</sup>  
3. Rubber cable from end (VSKB) 1,5mm<sup>2</sup>  
4. Connection cable through-wiring (MSK) 2,5mm<sup>2</sup>  
5. Connection cable through-wiring (VSKB) 2,5mm<sup>2</sup>  
6. Quick connection through-wiring 5x1,5-2,5mm<sup>2</sup>  
7. Connection cover 5x2,5mm<sup>2</sup>  
8. Connection cover through-wiring 5x2,5mm<sup>2</sup>

**Control option**

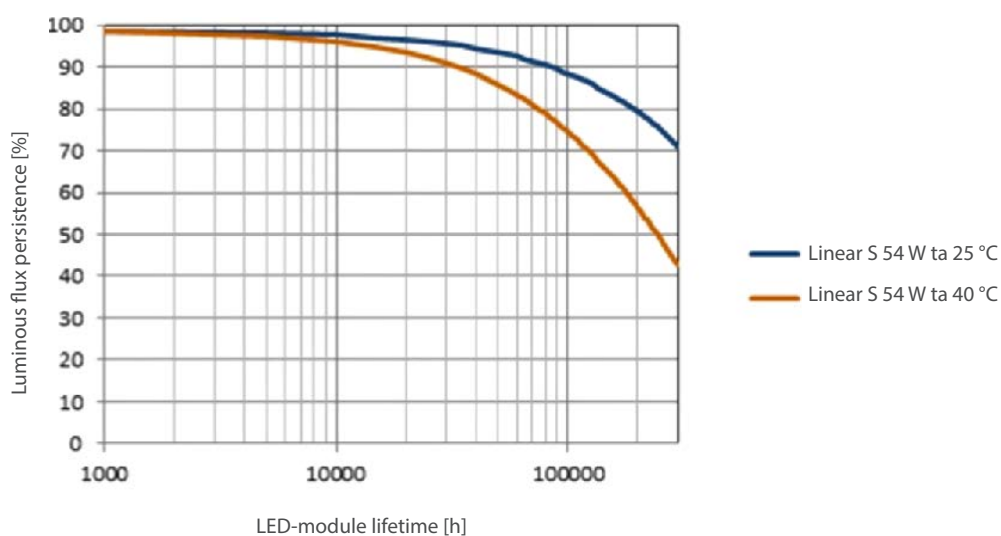
0 = No control  
2 = DALI  
4 = Industrial (-40...+50°C)  
5 = Industrial DALI (-40...+50°C)

Every combination is not possible

## Linear S- standard products

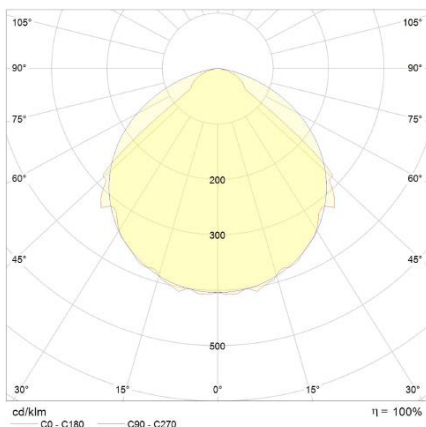
Type	Degree of protection	Operating temperature	IK-class	Optics	Power	Luminous flux (Luminaire)
SNEP Linear S 840-P1C-44S-561100	IP44	-25...+40°C	IK08	P1C	54W	8150 lm
SNEP Linear S 840-P1M-44S-561100	IP44	-25...+40°C	IK08	P1M	54W	7370 lm
SNEP Linear S 840-P1S-44S-561100	IP44	-25...+40°C	IK08	P1S	54W	7770 lm
SNEP Linear S 840-P1C-44S-568000	IP44	-25...+40°C	IK08	P1C	54W	8150 lm
SNEP Linear S 840-P1M-44S-568000	IP44	-25...+40°C	IK08	P1M	54W	7370 lm
SNEP Linear S 840-P1S-44S-568000	IP44	-25...+40°C	IK08	P1S	54W	7770 lm

## Luminous flux persistence

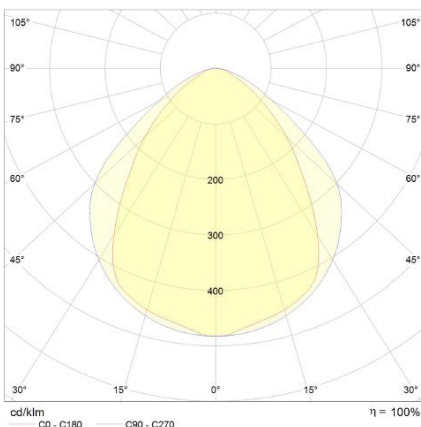


## Light distribution charts

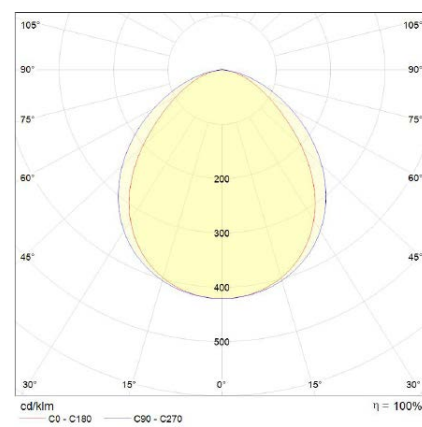
### P1C



### P1M



### P1S



P1C				
Power W	Colour temperature (CCT)	CRI (Ra)	Luminous flux lm (luminaire)	Luminous efficacy lm/W (luminaire)
27	3000K	typ. 85	4310	160
27	4000K	typ. 85	4430	164
27	5000K	typ. 85	4550	169
34	3000K	typ. 85	5330	157
34	4000K	typ. 85	5340	157
34	5000K	typ. 85	5480	161
43	3000K	typ. 85	6540	152
43	4000K	typ. 85	6600	153
43	5000K	typ. 85	6760	157
54	3000K	typ. 85	8070	149
54	4000K	typ. 85	8290	154
54	5000K	typ. 85	8510	158
68	3000K	typ. 85	9780	144
68	4000K	typ. 85	10170	150
68	5000K	typ. 85	10450	154

P1M				
Power W	Colour temperature (CCT)	CRI (Ra)	Luminous flux lm (luminaire)	Luminous efficacy lm/W (luminaire)
27	3000K	typ. 85	3960	147
27	4000K	typ. 85	4130	153
27	5000K	typ. 85	4240	157
34	3000K	typ. 85	4770	140
34	4000K	typ. 85	4970	146
34	5000K	typ. 85	5110	150
43	3000K	typ. 85	5900	137
43	4000K	typ. 85	6150	143
43	5000K	typ. 85	6310	147
54	3000K	typ. 85	7410	137
54	4000K	typ. 85	7720	143
54	5000K	typ. 85	7930	147
68	3000K	typ. 85	9080	134
68	4000K	typ. 85	9480	139
68	5000K	typ. 85	9730	143

P1S				
Power W	Colour temperature (CCT)	CRI (Ra)	Luminous flux lm (luminaire)	Luminous efficacy lm/W (luminaire)
27	3000K	typ. 85	4110	152
27	4000K	typ. 85	4280	159
27	5000K	typ. 85	4280	159
34	3000K	typ. 85	4940	145
34	4000K	typ. 85	5150	151
34	5000K	typ. 85	5170	152
43	3000K	typ. 85	6100	142
43	4000K	typ. 85	6360	148
43	5000K	typ. 85	6540	152
54	3000K	typ. 85	7680	142
54	4000K	typ. 85	8000	148
54	5000K	typ. 85	8220	152
68	3000K	typ. 85	9430	139
68	4000K	typ. 85	9830	145
68	5000K	typ. 85	10090	148