

LED

**EXPLOSION-PROOF
LIGHT FIXTURES**

FOR ZONES 1,21 & 2,22



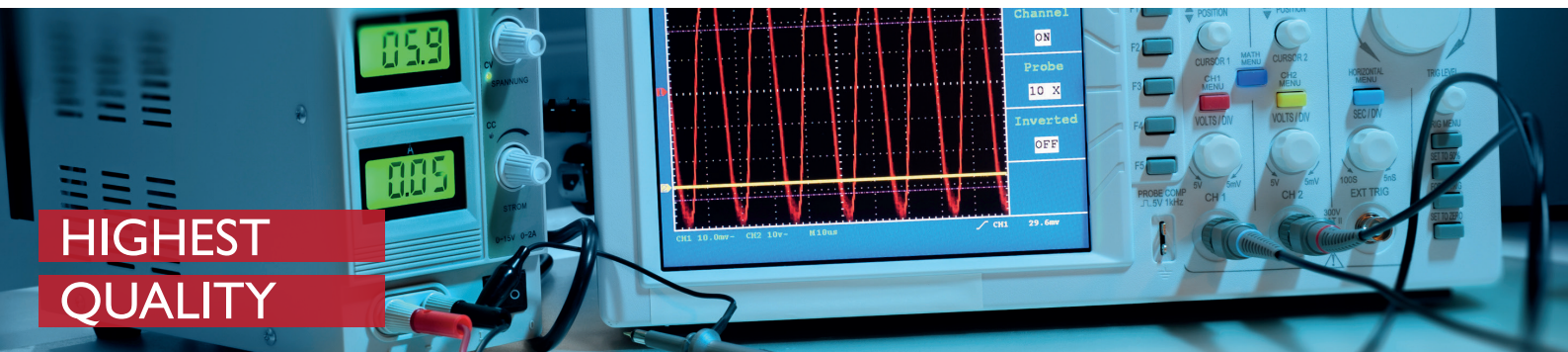


OUR COMPANY

We are a Polish manufacturer of specialized, industrial lighting fixtures. We have been creating advanced and innovative solutions for over 11 years. We specialize in structures dedicated to difficult working conditions and harsh environments.

We design, manufacture and sell lighting fixtures dedicated to various market sectors. Our offer is divided into five main divisions: explosion-proof fixtures and accessories, vandal-proof fixtures (for railway infrastructure and tunnels), fixtures for prisons and penitentiary establishments, heavy-duty light fixtures for industry and street tunnel lighting.

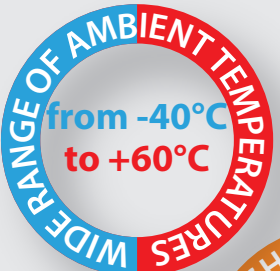
We support our clients at each stage of selecting and designing lighting. In cooperation with customers we develop special solutions dedicated to a specific project and application.



HIGHEST QUALITY

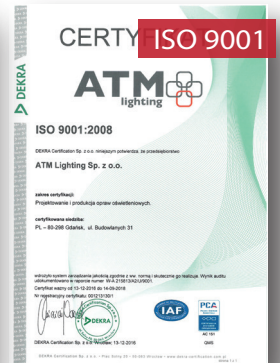
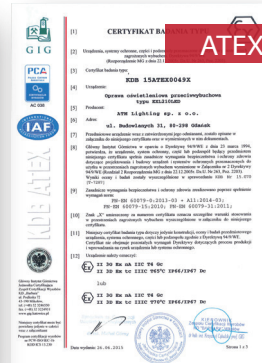
Our range of explosionproof light fittings consists of 2 product series. The **EXF series** is a specialized group of explosion-proof luminaires for the **zone 1,21** of the explosion hazard of gases, vapors and mists of flammable liquids with air. Characteristic feature of this group are special, designed by us, encapsulated LED modules suitable for operation in such demanding conditions.

ADVANTAGES OF OUR PRODUCTS

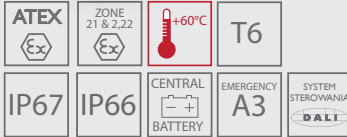
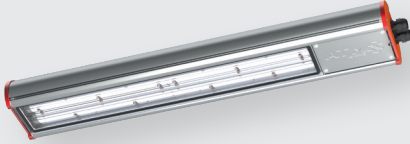


Our Zone 21, 2&22 fixtures **are available with optional** DALI compatible drivers which allows to monitor and control lighting.

For the production we use only the highest quality materials from reputable manufacturers. Thanks to strict quality control procedures, we can offer products that guarantee long and trouble-free operation.



II 3G Ex ec IIC T6/T5 Gc
II 2D Ex tb IIIC T75°C/T100°C Db



EXL400LED

Explosion-proof light fixture with LED modules. Designed to work in the zone 21 & 2.22 of the explosion hazard of gases, vapors and mists of flammable liquids with air, as well as of flammable dusts and fibers. The **housing is made of aluminum** and the diffuser is made of polycarbonate or tempered glass.

Optional version with 24VDC supply, autonomous A3 power source or DALI control system.

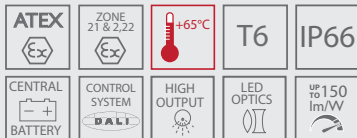
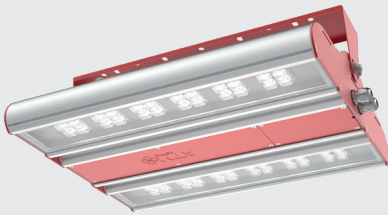
EXL400LED-...EXIT

Special version of the light fitting designed to illuminate escape routes in explosion hazard zones.



ATEX
certified

II 3G Ex ec IIC T6 Gc
II 2D Ex tb IIIC T70°C Db

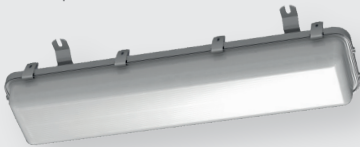


EXL450LED

Explosion-proof floodlight with LED modules and various types of optics with a **maximum luminous flux of 34,000 lm**. It is designed for operation in zones 21 & 2.22 of the explosion hazard of gases, vapors and mists of flammable liquids with air, as well as of flammable dusts and fibers. Housing made of **high-quality anodized aluminum**. Diffuser made of polycarbonate or tempered glass. Mounting brackets made of stainless steel.

Very wide operating temperature range from -40 ° C to + 65 ° C. Optional version with DALI control system and protective net.

II 3G Ex ec op is IIC T4 Gc
II 2D Ex tb op is IIIC T70°C IP66/67 Db

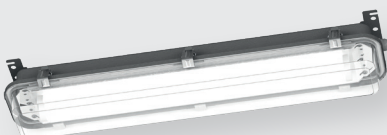


EXL210LED

Explosion-proof light fixture with LED modules, designed to work in zones 21 and 2,22 of explosion hazard.

Optional version with autonomous A3 power source or DALI control system.

II 3G Ex ec op is IIC T4 Gc
II 2D Ex tb op is IIIC T70°C IP67 Db



EXL310LED

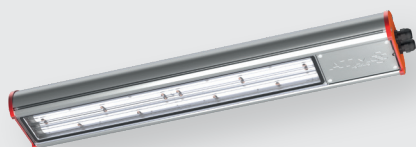
Explosion-proof light fitting with LED modules and special optics. Designed to work in zones 21 and 2,22 of explosion hazard. EXL310LED has a **high degree of impact resistance IK10**. A version compatible with the **DALI control system and emergency versions ZB or A3 are also available.**

EXPLOSION-PROOF LIGHT FIXTURES

INSTALLATION: OIL TANKS

NEW

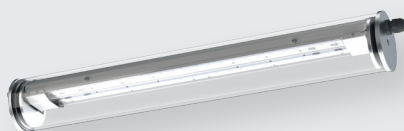
II 2G Ex ec IIC T5 Gb
II 2D Ex tb IIIC T70°C Db



EXF400LED

Explosionproof light fixture with **encapsulated LED modules**. Designed to work in zones 1,21 & 2,22 of the explosion hazard of gases, vapors and mists of flammable liquids with air, as well as of flammable dusts and fibers. Housing made of high-quality anodized **aluminum**. Diffuser made of polycarbonate or tempered glass. **Optional version with DALI interface**.

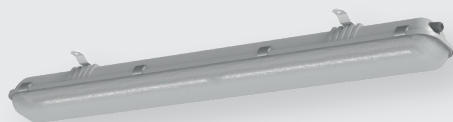
II 2G Ex ec IIC T6/T5 Gb
II 2D Ex tb IIIC T75°C/T100°C Db



EXF242LED

Explosion-proof, tubular light fixture with encapsulated LED modules. Designed to work in zones 1,21 & 2,22 of the explosion hazard of gases, vapors and mists of flammable liquids with air, as well as of flammable dusts and fibers. **Diffuser made of borosilicate glass. Stainless steel or aluminum endcaps. Very high degree of protection IP68.**

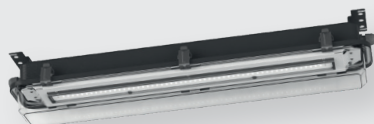
II 2G Ex eb mb op is IIC T5 Gb
II 2D Ex tb op is IIIC T55°C-T70°C IP66/67 Db



EXF250LED

Explosionproof light fitting with **encapsulated LED modules**. Designed for use in zones 1,21 and 2,22 of explosion hazard areas. Housing is made of GRP, diffuser is made of PMMA or UV stabilized polycarbonate. This light fitting is optionally available to use with **central battery (ZB)** or with an autonomous, **3h emergency power supply unit (A3)**.

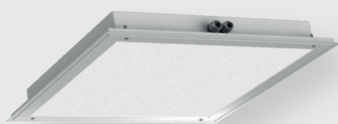
II 2G Ex eb mb op is IIC T5 Gb
II 2D Ex tb op is IIIC T55°C-T70°C IP67 Db



EXF300LED

Explosionproof light fitting with encapsulated LED modules. Designed for use in zones 1,21 and 2,22 of explosion hazard areas. Housing is made of **stainless steel**, UV stabilized polycarbonate diffuser. EXF300LED has a **high degree of impact resistance IK10**. It is also optionally available to use with **central battery (ZB)** or with **3h emergency power supply unit (A3)**.

II 2G Ex eb mb ec op is IIC T5 Gb
II 2D Ex tb op is IIIC T70°C Db



EXF390LED

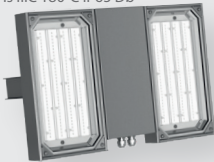
Explosionproof coffer light fitting with **encapsulated LED modules**, designed to use in zones 1,21 and 2,22 of explosion hazard areas. The luminaire is available in three different versions: **modular coffered ceiling version, recessed version for suspended ceiling and surface version.**

ZONE 21 & 2,22



INSTALLATION: PHARMACEUTICAL COMPANY

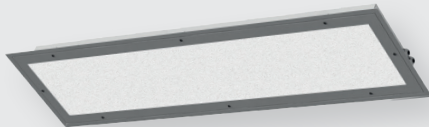
II 3G Ex ec op is IIC T4 Gc
II 2D Ex tb op is IIC T80°C IP65 Db



EXL380LED

Explosion-proof floodlight with LED modules and special optics. Designed to work in zones 21 and 2,22 of explosion hazard. The **maximum flux is nearly 17,000lm**. Housing made of brushed or powder coated stainless steel. Optionally can be equipped with protective grid and DALI compatible driver.

II 3G Ex ec op is IIC T4 Gc
II 2D Ex tb op is IIC T70°C IP65 Db



EXL390LED

Explosion-proof coffer luminaire with LED modules, designed to work in zones 21 and 2, 22 of explosion hazard. The luminaire is available in two different **shapes for 600x600 or 1200x300 modular ceilings**. Additional accessories allows to use it as surface mounted or recessed into a suspended ceiling.

ZONE 1,21 & 2,22

EXPLOSION-PROOF EQUIPMENT

RK01



SKX14/1



SKX13/10



SKX12/34



SKX 13/1



SKX12/22



SKX12/33



SKX15/11-11





ATM Lighting sp. z o.o.

ul. Maszynowa 30A

80-298 Gdańsk

POLAND

ph.: +48 58 347 51 07

office@atmlighting.pl

www.atmlighting.pl

