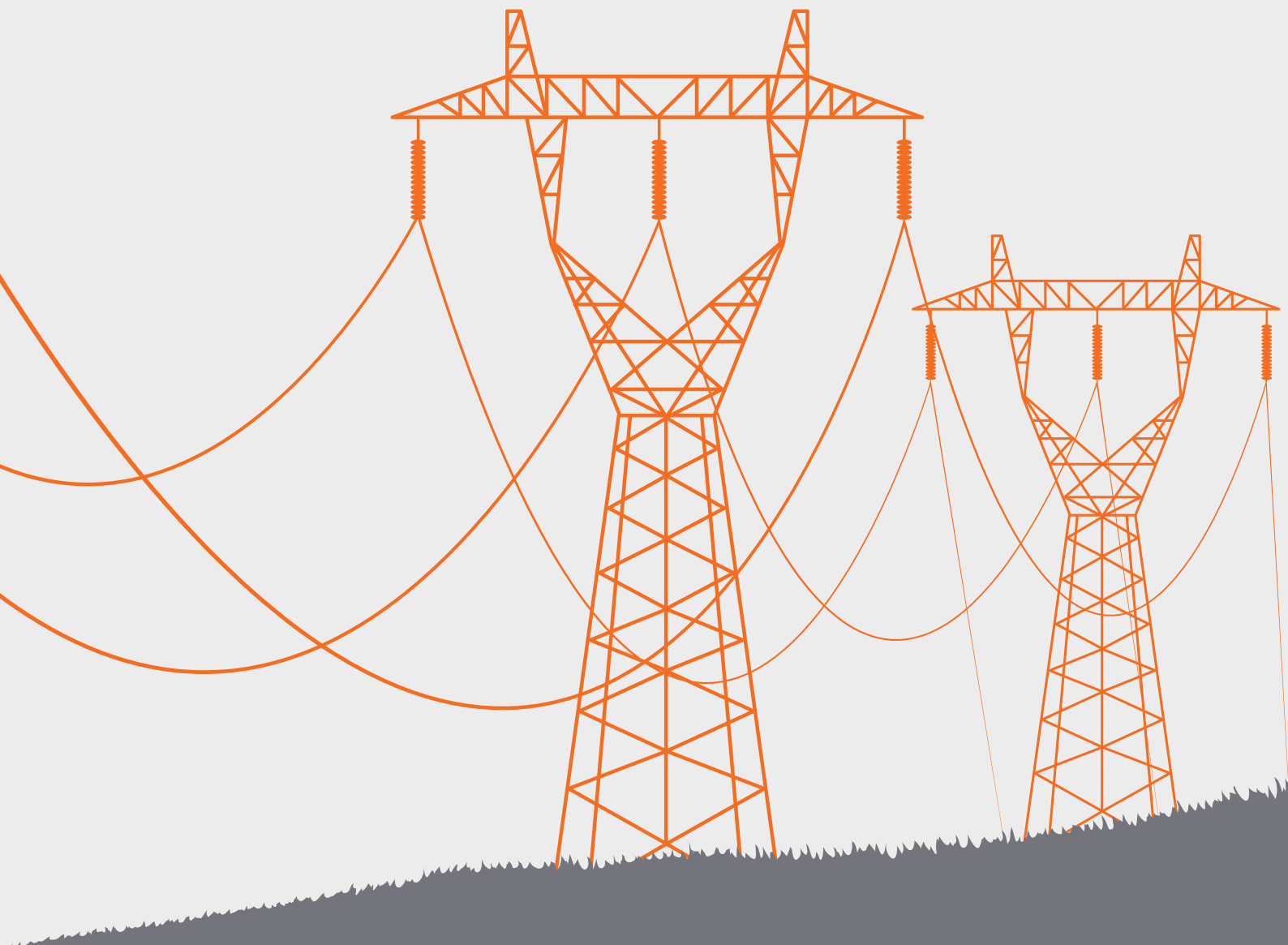


LATTICE STEEL STRUCTURES



ABOUT US

TECNOPALI NORTH EUROPE IS THE LARGEST STEEL LIGHTING POLE, HIGH MAST AND ACCOMPANYING STEEL STRUCTURE PRODUCER IN THE BALTICS, LOCATED IN DAUGMALE, LATVIA.

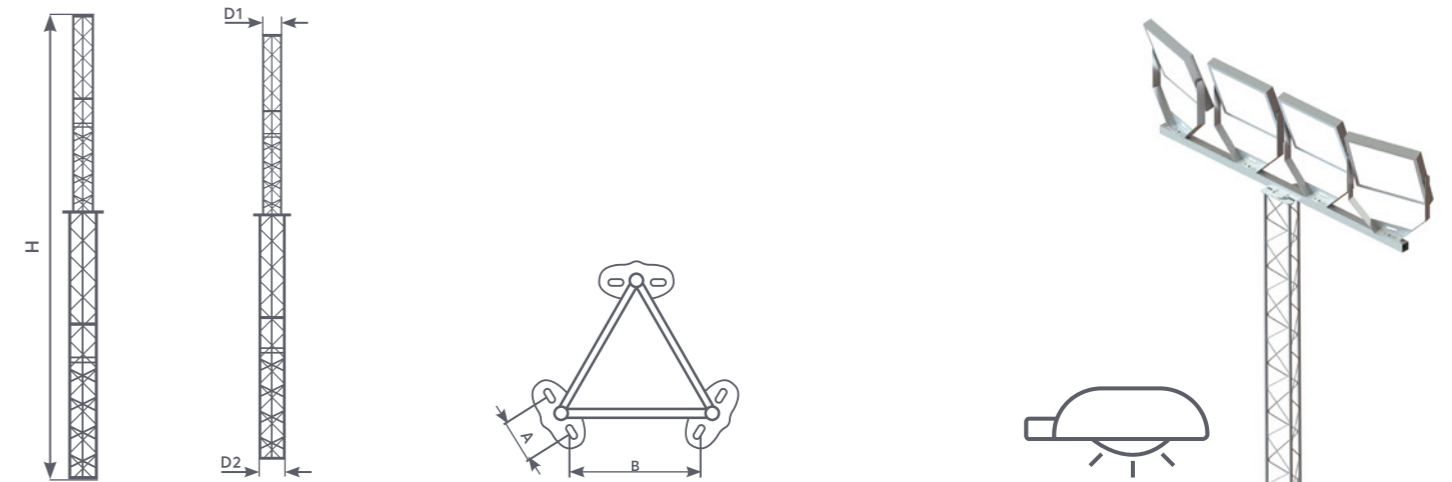
TECNOPALI NORTH EUROPE PRODUCES A WIDE RANGE OF PRODUCTS

- CONICAL, STEPPED AND CYLINDRICAL POLES
- PASSIVE SAFETY POLES (HE2; HE3)
- MONOTUBULAR MASTS
- CATENARY POLES
- DECORATIVE POLES
- LATTICE POLES, MASTS AND PORTALS
- TRAFFIC LIGHT AND SIGN STRUCTURES
- CUSTOM DESIGN AND PROJECTS

FLEXIBLE PRODUCTION, HIGH QUALITY STANDARDS AND WIDE COATING OPTIONS TOGETHER WITH HIGHLY SKILLED ENGINEERS ALLOWS **TECNOPALI NORTH EUROPE** TO OFFER BOTH STANDARD AND HIGHLY CUSTOM PRODUCTS WHICH MEET INDIVIDUAL NEEDS OF OUR CUSTOMERS ALL ACROSS EUROPE.

OUR PRODUCTS ARE DESIGNED AND ENGINEERED TO MEET THE STRICTEST INTERNATIONAL STANDARDS: EN 40-5, EN12767 FOR LIGHTING POLES; EN 1090 FOR STEEL STRUCTURES; EN 12899 FOR TRAFFIC LIGHTS AND ROAD SIGNS.

FLOODLIGHT MASTS



HEIGHT	TOP	BOTTOM	BASE		NUMBER OF SECTIONS	MAX WIND LOAD VREF=24M/S
H (MM)	D1 (MM)	D2 (MM)	B (MM)	A (MM)		M ²
12000	250	250	180	140	2	1.2
15000	200	300	230	140	2	1.2
18000	200	400	330	140	3	1.5
20000	250	450	370	160	3	1.5
24000	250	550	470	160	4	1.5

DESIGN

MASTS ARE DESIGNED, PRODUCED AND CE CERTIFIED ACCORDING TO EN 1090

DESIGN ACCORDING TO EN 1993-3-1:2012 EUROCODE

MADE OF S355 CLASS ROUND BARS

HOT DIP GALVANIZED ACCORDING TO EN ISO 1461 FOR CORROSION PROTECTION

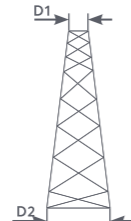
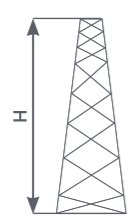
ON THE REQUEST MASTS COULD BE FULLY PAINTED OR ROOT PAINTED

STRUCTURES CONSIST OF 2-4 SECTIONS, ASSEMBLED BY MEANS OF BOLTED CONNECTION

OTHER MODELS OF MASTS WITH DIFFERENT HEIGHTS AND LOADS COULD BE PROVIDED ON THE REQUEST.

DIFFERENT INSTALLATION ACCESSORIES ARE AVAILABLE. [SEE PAGE 9 FOR MORE INFO.](#)

ANGLED FLOODLIGHT MASTS



HEIGHT	TOP	BOTTOM	MAX WIND LOAD VREF=24M/S
H (MM)	D1 (MM)	D2 (MM)	M ²
15000	200	800	1
20000	200	1000	1.2
25000	200	1200	1.5
30000	300	1500	2.5
35000	300	2000	3

DESIGN

MASTS ARE DESIGNED, PRODUCED AND CE CERTIFIED ACCORDING TO EN 1090

DESIGN ACCORDING TO EN 1993-3-1:2012 EUROCODE

MADE OF S355 CLASS STEEL ANGLES

ON THE REQUEST MASTS COULD BE FULLY PAINTED

STRUCTURES CONSIST OF 2-4 SECTIONS, ASSEMBLED BY MEANS OF BOLTED CONNECTION

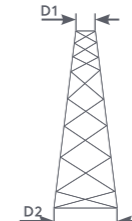
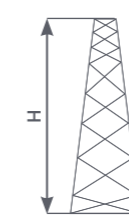
MASTS COULD BE EQUIPPED WITH CLIMBING LADDERS, PLATFORM, CROSSARMS AND OTHER ACCESSORIES

HOT DIP GALVANIZED ACCORDING TO EN ISO 1461 FOR CORROSION PROTECTION

OTHER MODELS OF MASTS WITH DIFFERENT HEIGHTS AND LOADS COULD BE PROVIDED ON THE REQUEST.

DIFFERENT INSTALLATION ACCESSORIES ARE AVAILABLE. [SEE PAGE 9 FOR MORE INFO.](#)

TELECOMMUNICATION MASTS



HEIGHT	TOP	BOTTOM	MAX WIND LOAD VREF=24M/S
H (MM)	D1 (MM)	D2 (MM)	M ²
25000	400	2000	14
30000	500	2000	12.5
35000	750	3000	12
40000	1000	4000	12
45000	1000	4500	10.5

DESIGN

MASTS ARE DESIGNED, PRODUCED AND CE CERTIFIED ACCORDING TO EN 1090

DESIGN ACCORDING TO EN 1993-3-1:2012 EUROCODE

MADE OF S355 CLASS STEEL ANGLES

HOT DIP GALVANIZED ACCORDING TO EN ISO 1461 FOR CORROSION PROTECTION

ON THE REQUEST MASTS COULD BE FULLY PAINTED

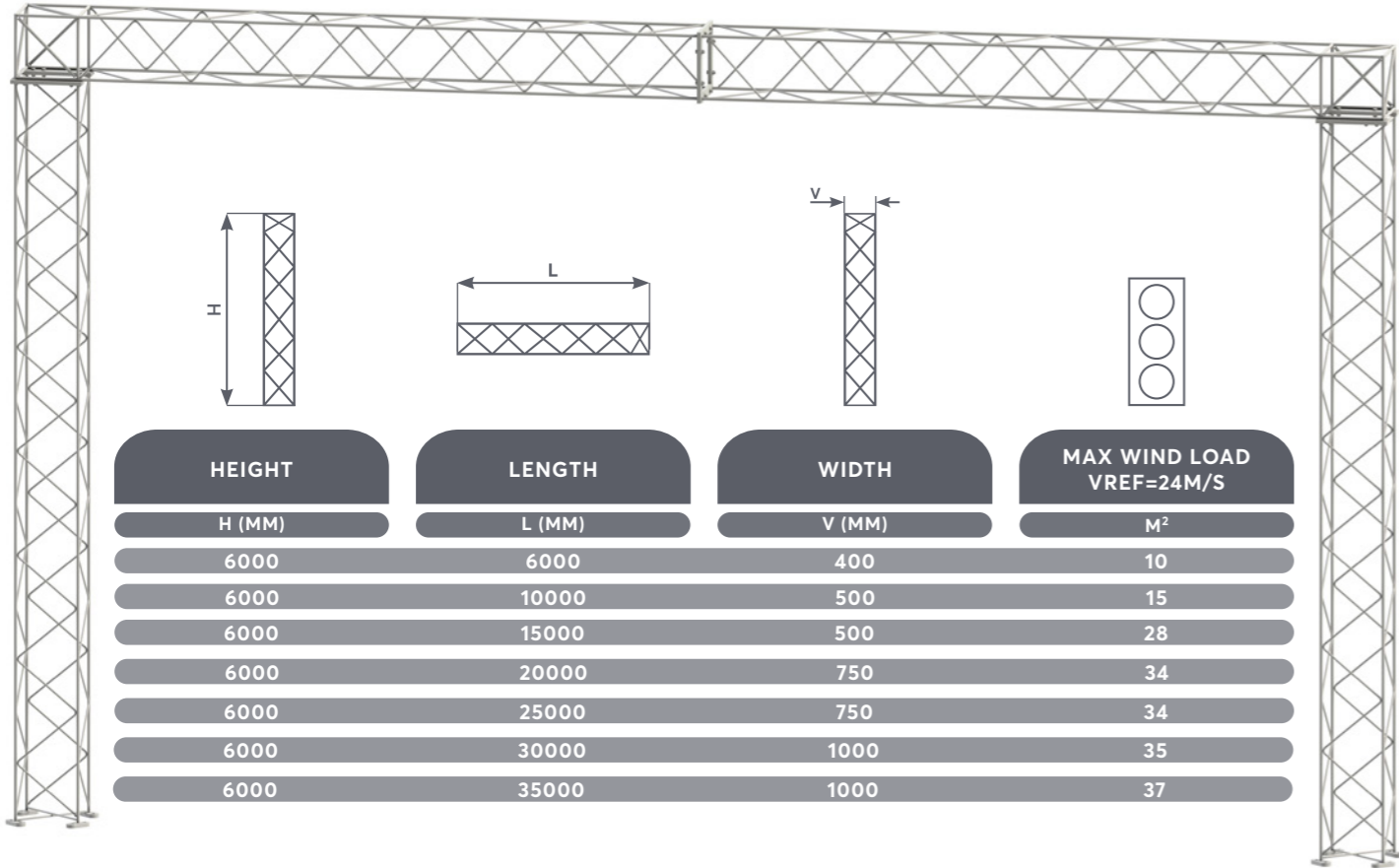
STRUCTURES ARE FULLY DEMOUNTABLE. ALL ANGLES ARE BEING ASSEMBLED BY MEANS OF BOLTED CONNECTION

MASTS COULD BE EQUIPPED WITH CLIMBING LADDERS, PLATFORM, CROSSARMS AND OTHER ACCESSORIES.

OTHER MODELS OF MASTS WITH DIFFERENT HEIGHTS AND LOADS COULD BE PROVIDED ON THE REQUEST.

DIFFERENT INSTALLATION ACCESSORIES ARE AVAILABLE. [SEE PAGE 9 FOR MORE INFO.](#)

TRAFFIC PORTALS



DESIGN

▲
PORTALS ARE DESIGNED, PRODUCED AND CE CERTIFIED ACCORDING TO EN 1090

▲
SQUARE CROSS SECTION

▲
MADE OF S355 CLASS ROUND BARS

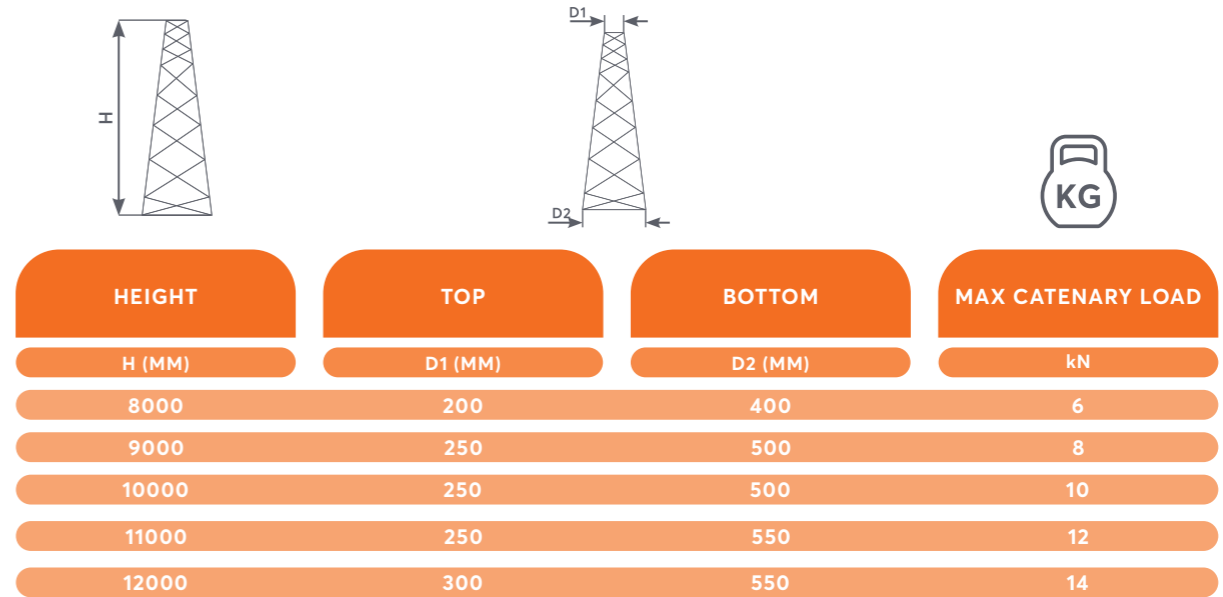
▼
HOT DIP GALVANIZED ACCORDING TO EN ISO 1461 FOR CORROSION PROTECTION

▼
ON THE REQUEST POLES COULD BE FULLY PAINTED OR ROOT PAINTED

▼
STRUCTURES CONSIST OF 2-4 SECTIONS, ASSEMBLED BY MEANS OF BOLTED CONNECTION

OTHER MODELS OF PORTALS WITH DIFFERENT HEIGHTS AND LOADS COULD BE PROVIDED ON THE REQUEST.

CATENARY POLES



DESIGN

○
POLES ARE DESIGNED, PRODUCED AND CE CERTIFIED ACCORDING TO EN 1090

○
MADE OF S355 CLASS ROUND BARS

○
HOT DIP GALVANIZED ACCORDING TO EN ISO 1461 FOR CORROSION PROTECTION

○
ON THE REQUEST POLES COULD BE FULLY PAINTED OR ROOT PAINTED

○
SPECIFIED LOAD APPLIED ON TOP OF THE POLE

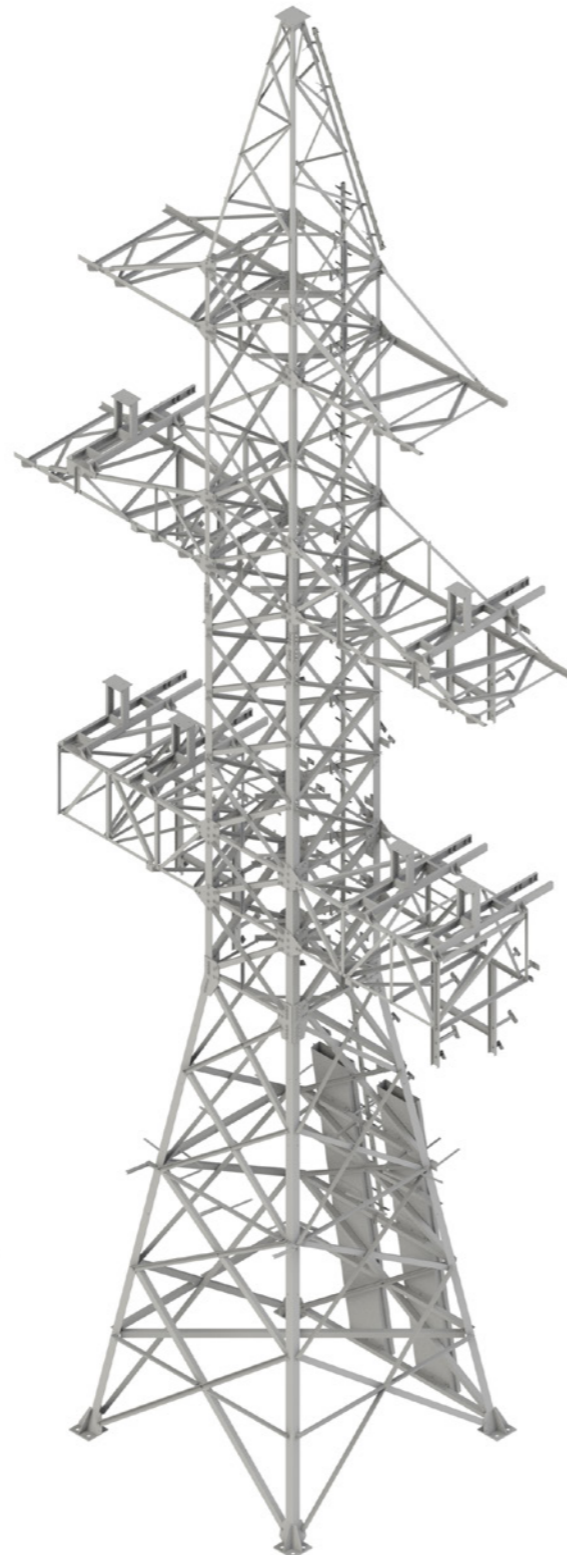
OTHER MODELS OF PORTALS WITH DIFFERENT HEIGHTS AND LOADS COULD BE PROVIDED ON THE REQUEST.

POWER TRANSMISSION TOWERS AND SUBSTATIONS

ABOVE STANDARD LATTICE MASTS AND CONSTRUCTIONS, TECNOPALI NORTH EUROPE HAS KNOWLEDGE AND EXPERIENCE IN PRODUCTION OF LATTICE CONSTRUCTIONS FOR POWER TRANSMISSION, SUBSTATIONS AND TOWERS FOR HIGH VOLTAGE OVERHEAD POWER LINES.

WITH HIGHLY SKILLED PRODUCTION TEAM, TECNOPALI NORTH EUROPE ENSURE TO FULFILL THE STRICTEST PROJECT PRODUCTION AND QUALITY REQUIREMENTS.

STEEL STRUCTURES ARE BEING SUPPLIED BASED ON PARTICULAR PROJECT DESIGN.

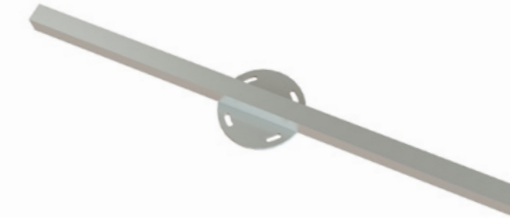


ACCESSORIES

MASTS COULD BE ADDITIONALLY EQUIPPED WITH ACCESSORIES FOR FLOODLIGHTS OR OTHER EQUIPMENT INSTALLATION, CLIMBING LADDERS AND ANCHOR BOLTS



CROSSARM



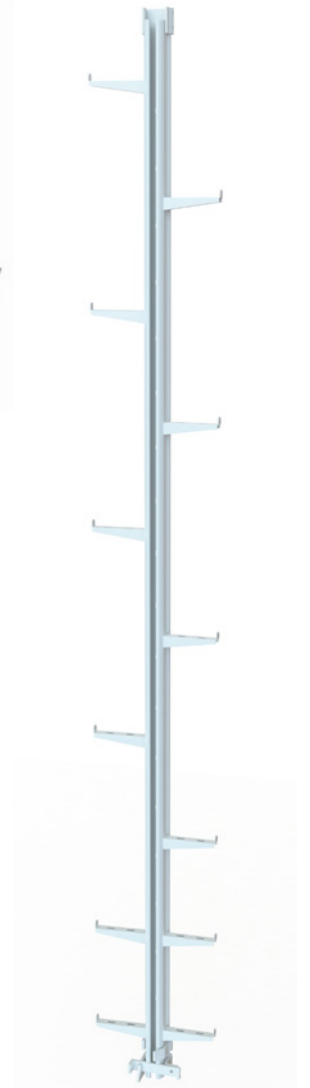
TRAVERSE



PLATFORM



ANCHOR BOLTS SET



CLIMBING LADDERS



CONTACTS

TEL: +371 67148855
E-MAIL: SALES@TECNOPALI.LV
WWW.TECNOPALI.LV

HOW TO FIND US

"VECRATNIEKI", ĶEKAVAS NOV.,
DAUGMALES PAG., LV-2124, LATVIA



